

Quick Poll on AI in Training

01

BACKGROUND

Data Collection Period: 12 March – 3 April 2025

Participating Companies: 111



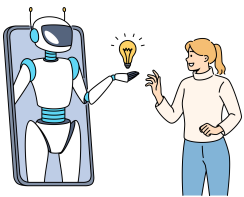
02

KEY FINDINGS

- **65%** of the responding companies indicated that they had AI-based learning initiatives in place at the time of when the poll was taken.
- Top three challenges* encountered when integrating AI into learning strategies:

1. Lack of technical expertise	52%
2. Data privacy and security concerns	44%
3. Difficulty in identifying the right AI tools / technologies	35%
- **64%** of the responding companies* indicated the adoption of AI in learning & development (L&D) at their organisation was expected to scale up significantly or moderately in 2025.
- Likelihood to invest in AI technologies for employee L&D in 2025

Very / quite likely	36%
Neutral	36%
Not that / not at all likely	28%



*companies with AI-based learning initiatives

**companies without AI-based learning initiatives